

PROJECT'S FEATURES

Develop an EA using basically color of candlestick, special fractor indicator (has to be shown on the chart), and different way to close the position. Report on the screen with the profit and loss recap

CONFIGURATION ** All the value reported can be changed manually*

- Hours 08:00 - 18:00
- Time Frame 1min/2min/5min/..
- Fixed Lot (0.07)

-----CONDITION TO OPEN & CLOSE-----

- MIN Body Candlestick (pip) (0.7) value ABS (Close price- Open price). If (0) doesn't work
- Relative Strength Index (RSI)
 - Time Period (2)
 - RSI SELL OPEN Trade (90)
 - RSI SELL CLOSE Trade (9)
 - RSI SELL CLOSE MINOR Trade (15) if (0) doesn't work
 - RSI BUY OPEN trade (5)
 - RSI BUY CLOSE Trade (90)
 - RSI BUY CLOSE MINOR Trade (84) if (0) doesn't work
- Next Open Trade After (3) value has to be expressed in bar of candlestick after trade closed
If (0) doesn't work
- Fixed Stop Loss (pip) (15) if (0) doesn't work
- Open SMA Simple Media Average at the Close Price. If (0) doesn't work
- Open SMA Time Period (200)
- Close SMA Simple Media Average at the Close Price. If (0) doesn't work
- Close SMA Time Period (5)

PROCEDURE TO OPEN THE POSITION-----

PROCEDURE FOR SELL

Every time as per timeframe choose, a timing when the candlestick close:

Candlestick Body > MIN Body Candlestick AND

Candlestick is RED AND

RSI < RSI SELL OPEN Trade AND

RSI (-1candlestick) > RSI SELL OPEN Trade AND

RSI > RSI SELL CLOSE MINOR Trade AND

FRACTAL ARROW is RED AND

FRACTAL ARROW is NOT GREEN AND

Actual Price < Open SMA

* if value SMA (0) doesn't work as condition

PROCEDURE FOR BUY

Every time as per timeframe choose, a timing when the candlestick close:

Candlestick Body > MIN Body Candlestick AND

Candlestick is GREEN AND

RSI > RSI BUY OPEN Trade AND

RSI (-1candlestick) < RSI BUY OPEN Trade AND

RSI < RSI BUY CLOSE MINOR Trade AND

FRACTAL ARROW is GREEN AND

FRACTAL ARROW is NOT RED AND

Actual Price > Open SMA

* if value SMA (0) doesn't work as condition

SELL POSITION



BUY POSITION



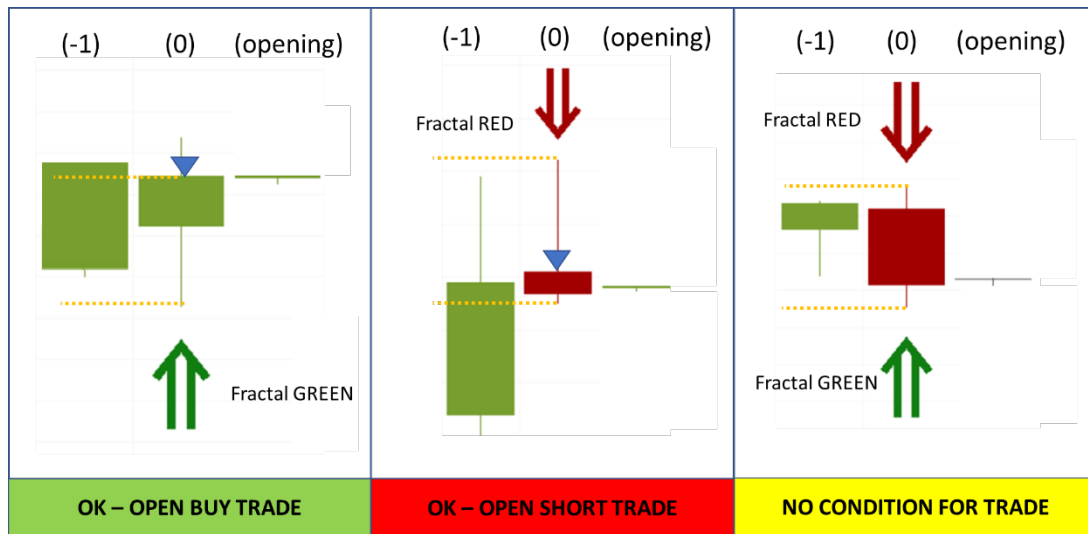
DEFINITION OF FRACTAL

- It's a standard calculation of Fractal BUT we consider ONLY the PREVIOUS ALREADY CLOSED bars and NOT the following, according to value of Fractal Candlestick.
- Round up the value of price after 5 digits after the dot before do the calculation of fractal
- Attention: one candlestick can have both fractal green and red but is not suitable for opening a position

Example: if we consider Candlestick period (0) the candlestick JUST closed where we're checking the possibility to enter in the market, if we consider Fractal Candlestick (1) the result has been the following:

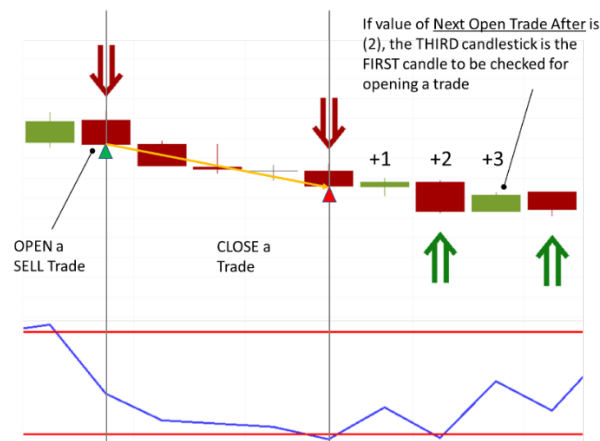
FRACTAL GREEN

FRACTAL RED



Next Open Trade After (detail)

When the the order IS CLOSED, the new possibility to OPEN a NEW POSITION has to be checked AFTER the value of Next Open Trade After



PROCEDURE TO CLOSE THE TRADES-

Different possibilities are present. The first one that meet the requirements close the trade/trades.

1) FIXED STOP LOSS: If the actual price reach the value of Fixed Stop Loss, close the trade

5) STANDARD CLOSE TRADING

BUY POSITION Close the trade when RSI (close price candlestick) is ABOVE RSI BUY CLOSE Trade

SELL POSITION Close the trade when RSI (close price candlestick) is BELOW RSI SELL CLOSE Trade

6) CLOSE FOR MINOR CONDITION

Keeping in the consideration the other 2 value of RSI setted, there are a possibility to CLOSE earlier the trade/trades than standard closure we've seen above.

BUY POSITION

RSI < RSI BUY CLOSE Trade AND

RSI > RSI BUY CLOSE MINOR Trade



SELL POSITION

RSI > RSI SELL CLOSE Trade AND

RSI < RSI SELL CLOSE MINOR Trade



If I set: RSI BUY CLOSE Trade= RSI BUY CLOSE MINOR Trade

RSI SELL CLOSE Trade= RSI SELL CLOSE MINOR Trade

That condition 6) is not existing before it's the same of closing number 5)

7) CLOSE FOR CLOSE SMA

If Close SMA is activated (1), the EA stop the trade open as per following instruction:

A) BUY POSITION Close price at candlestick close ABOVE the Close SMA

B) SELL POSITION Close price at candlestick close BELOW the Close SMA

REPORT P&L-----

- The report can be visible but also hidden on the chart, according to the following real time information

	TODAY	YEAR TO DATE
Net Profit	€	€
Gross Loss	€ & pip	€ & pip
Gross Profit	€ & pip	€ & pip
Total Trade	nr	nr
Win Trade	nr & %	nr & %
Lost Rate	nr & %	nr & %
Average Win Trade	€ & pip	€ & pip
Average Lost Trade	€ & pip	€ & pip
Profit Factor	nr	nr
Medium Draw Dawn	pip	pip
Nr of Fixed Stop Loss	nr	nr
Nr of Immediate Stop Loss	nr	nr

